



FISCHER EASY SKIN

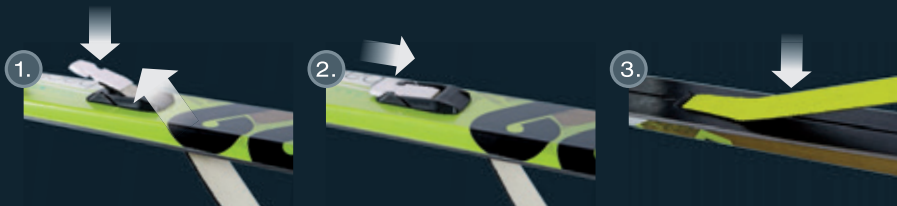
USER'S GUIDE



FISCHER EASY SKIN

THE EASIEST WAY TO ATTACH CLIMBING SKINS

Combination of adhesion and click-in-place for reliable grip and straightforward attachment and removal.





FISCHER EASY SKIN USER'S GUIDE

With the choice of FISCHER EASY SKIN climbing skins you have decided for a high-end-product that will make possible many wonderful backcountry tours for you. We say thank you for your reliance and wish you much fun with our products. To preserve their excellent capacities as long as possible, please pay attention to the following hints for care and storage. Before the first use please read the instructions carefully.



THE MATERIAL

Mohair from the hair of the mountain goat offers good sliding capacity. Skins made of 100% Mohair save power and glide rapidly. Nylon has more grip, is more water-repellent and durable than Mohair. The mixture of Mohair/Synthetics with medium pile combines the advantages of both materials in an ideal way and guarantees the best climbing and sliding capacities in every terrain. Waterproofing prevents clumping and balling of snow.



ADVISES FOR SKIN ATTACHMENT

- While putting the skins on the skis it's very important, that both adhesive- and ski-surface are as dry as possible.
- Take care to press the skin lightly but completely over the whole breadth onto the ski.
- The Standard glue is conceived for a good prepared (waxed, scraped and brushed) ski. Don't mount the skins to dried out ski bases, as the skins would stick too much.
- In severe cold: warm up the adhesive skins underneath your jacket for a few minutes and ensure that the ski base is completely clean and free from snow crystals before the skins are attached! Therefore don't scrape the skin over the edge of the ski.



ADVISES FOR DISMANTLING, STORAGE AND CARE

- Never scrape the skins over the edge of the ski!
- In general don't fold adhesive skins directly glue surface on glue surface, use the specially developed protective foil as separating layer. The use of the protective foil guarantees the best possible preservation of the glue adhesive properties therefore ensuring optimal performance and longevity of your ski skins.
- The exact folding is important to avoid dirt and drying out of the glue.
- Never roll the skins or adhere the adhesive side to the plush side!



ADVISES FOR DISMANTLING, STORAGE AND CARE

- Take the skins out of their Easy Skin bag immediately after each use. Hang them up stuck-together in a well-ventilated and dry place protected from direct sunlight. Only dry the skins at room temperature!
- Never lay the skins on a heater or other heat source. Never expose the skins to sunlight for a prolonged period!
- Store the properly dried skins in their Easy Skin bag, protected from sunlight in a cool, dry place.
- Treat the skins regularly (approximately 15 till 20 trips) with skin impregnate to prevent the formation of clusters and to improve the sliding ability as well as the longevity.



ADVISES FOR DISMANTLING, STORAGE AND CARE

- While longer trips we suggest taking skin wax with you. As needed use the wax against clusters and for better gliding performance.
- Check the condition of the skin glue after longer use. Renew the glue-surface with glue, which you apply thin with a spatula or brush to the cleaned skin. Before you fold it let it dry for at least six hours. Don't use glues from other distributors.
- Don't scrape the adhesive surface.
- Fischer recommends to use KOHLA Tirol® maintenance products.
- Remember: A properly tuned ski helps guarantee optimal performance of the skin adhesive and makes for a better descent too!



Fischer Sports GmbH
Fischerstr. 8
A-4910 Ried/Innkreis
fishersports.com

fishersports.com